

Multipurpose milling machine MFC 1270

MFC 1270 with digital position display in 3 axes, compl. assembled Nr.: 610875

The multi-purpose milling machine MFC 1270 is characterized by its stable and robust construction. With digital position display and automatic feed in all 3 axes



Technical specifications

Work table, clamping surface, mm	254 x 1270
Auto travel lengthwise, mm	680
Traverse path transverse autom., Mm	400
Vertical travel manually, mm	410
Vertical spindle:	
Spindle mount DIN 2080	ISO 40
Speed range, stepped, ranges / min-1	410-3500
Pinolenweg, mm	127
Quill feeds number	3

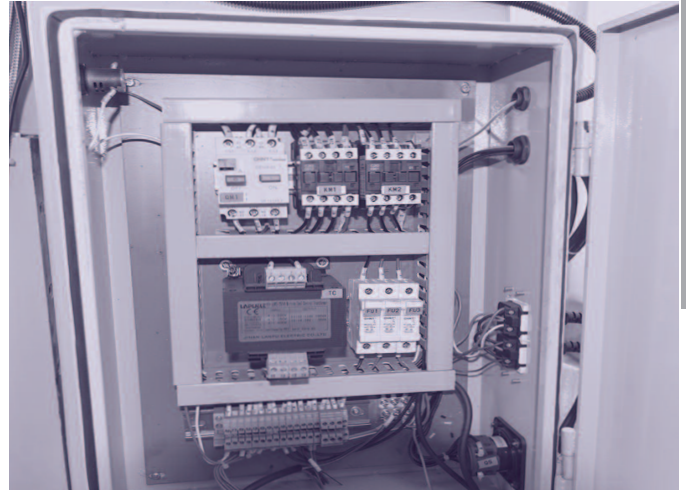
Quill feed size, mm / rev	0,04 - 0,08 - 0,13
Swivel range of the milling head	+/- 45°
Table longitudinal feed stepless, mm / min	0 - 720
Stepless table cross feed, mm / min	0 - 720
Rapid traverse mm / min	720
Spindle motor, kW	2,25
Dimensions, mm	1700 x 1660 x 2250
weight, kg	1550

Multipurpose milling machine MFC 1270

- Vertical milling head with powerful spindle motor, the head can be swiveled to the left and right and tilted forwards and backwards
- Stepless adjustment of the number of spindles
- Switching for the high and low speed range
- 3-axis digital position indicator
- Adjustable drilling depth stop for the quill
- Control cabinet according to VDI and CE
- Automatic feed for the table longitudinal movement and rapid traverse key
- Control panel with switching elements
- Switch for left and right rotation of the spindle
- Manual mechanical spindle brake
- Switching off the quill feed gear
- Shift lever for setting the 3 quill feed sizes
- Multi-position function lever for manual fine feed, automatic downward and upward feed and neutral position for manual lever feed
- Engaging lever for automatic feed
- Manual bracket adjustment in the Z-axis
- Automatic feed for the table cross movement and rapid traverse key



Quill taper



switch cabinet

Standard equipment

- complete Coolant device
- Machine light
- Digital position display in all axes
- Hardened and ground guideways
- Hardened and ground table surface
- Automatic feeds in the X and Y axes and rapid traverse
- Manual quills - fine feed via handwheel
- 3 automatic quill feeds
- Infinitely variable adjustment of the spindle speeds
- Stable flat guides in the Y and Z axes
- Tool pull rod M16
- Compl. electr. Equipment 400 V. / 50 Hz.
- Operating tools and documentation
- CE standard